

Edit-in-Place on a T2 Elite-A

January 2015

APPLICATION NOTE



Introduction

Since SP 2.0, NLE software can edit HQ or XDCAM clips directly on the T2 Elite-A model — also referred to as “edit-in-place.” This significantly speeds up the workflow because there is no need to transfer or convert media assets. This Application Note explains how edit-in-place works, using popular Macintosh and Windows NLE software.

NLE Software Tested with Edit-in-Place

Because edit-in-place on the T2 Elite-A uses the CIFS protocol, it is a feature that be taken advantage of by most leading NLE editing software applications, whether on a Macintosh or a PC:

Function	Format	Editing	EDIUS	Premiere Pro CC	Final Cut Pro 7	Media Composer
Captured on T2	Grass Valley HQ	Normal Editing	Yes	Yes*1	Yes*1	Yes*1, 2
		Time Shift Editing	Yes			
	XDCAM	Normal Editing	Yes	Yes		Yes
		Time Shift Editing*3	Yes	Yes		
Transcoded by T2	Grass Valley HQ	Normal Editing	Yes	Yes*1	Yes*1	Yes*1, 2
	XDCAM	Normal Editing	Yes	Yes		Yes

Notes:

Tested software: Grass Valley EDIUS Pro 7 (Win), Adobe Premiere Pro CC (Win/Mac), Apple Final Cut Pro 7 (Mac), Avid Media Composer 7 (Win).

Copying and exporting clips to internal storage of T2 from PC is not supported.

*1 Clips with 24-bit, 8-channel audio are not supported (the NLE will import video only). We recommend using clips with 16-bit, 2-channel audio.

*2 Grass Valley HQ is transcoded to DNxHD MXF.

*3 Ensure that [Allow to edit growing MXF file] is checked in [Input Settings] of [Config].

T2 Timeshift Functionality by Service Pack

T2 Function	Supported NLE	Capture Format	Location	SP2.0	SP1.3A	SP1.2	SP1.1	SP1.0	SP0
Direct access*1 (edit in place)	EDIUS Premiere Pro CC Media Composer Final Cut Pro 7	HQ XDCAM	Internal storage	Yes					
T2 FTP server*2	EDIUS	XDCAM	Internal storage	Yes	Yes				
FTP export to K2 SAN*3	EDIUS	XDCAM*6	Internal storage	Yes	Yes				
External capture*4	EDIUS	HQ XDCAM	External storage	Yes	Yes	Yes	Yes	Yes	
Exporting clips*5	EDIUS	HQ	Internal storage	Yes	Yes	Yes	Yes	Yes	Yes

*1 T2 Elite only.

*2 EDIUS (Source Browser) imports XDCAM clips into T2 via FTP.

*3 T2 exports XDCAM clips to K2 SAN. EDIUS (Source Browser) import of XDCAM clips from K2 SAN.

*4 EDIUS (Bin window) imports clips from external storage connected to the T2.

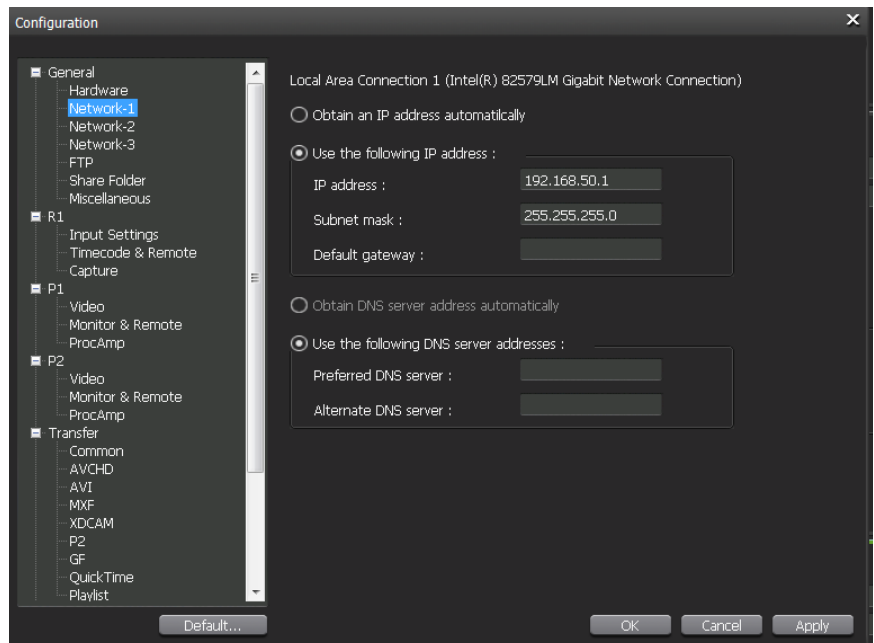
*5 T2 exports captured clips to external storage and EDIUS (Bin window) imports them.

*6 Clips are imported to EDIUS in CMF format.

Overview of Edit in Place Workflow on PC (tested using Windows 7)

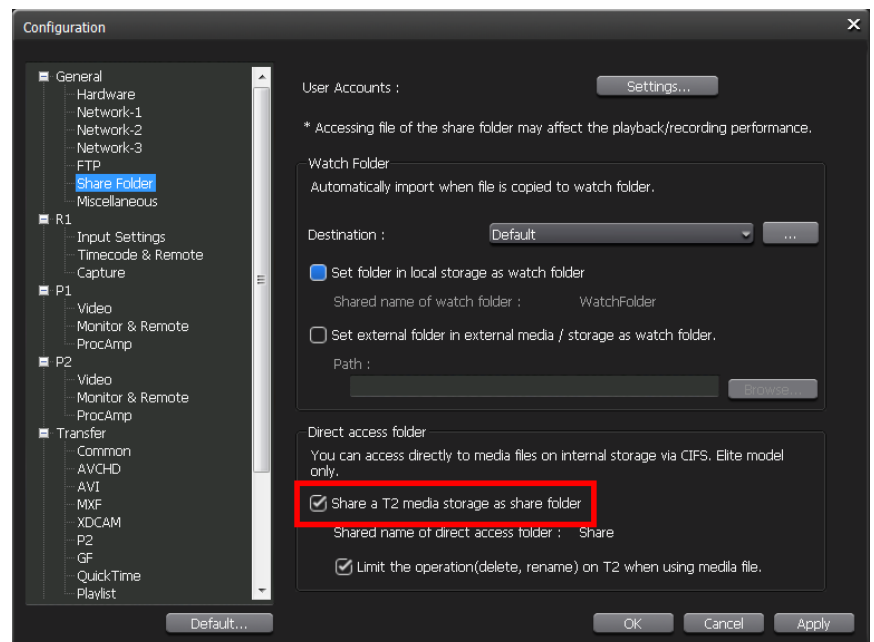
T2 Elite-A Settings

1. Select [Config.] > [General] > [Network 1 (or 2)] and configure the IP address and DNS server address.



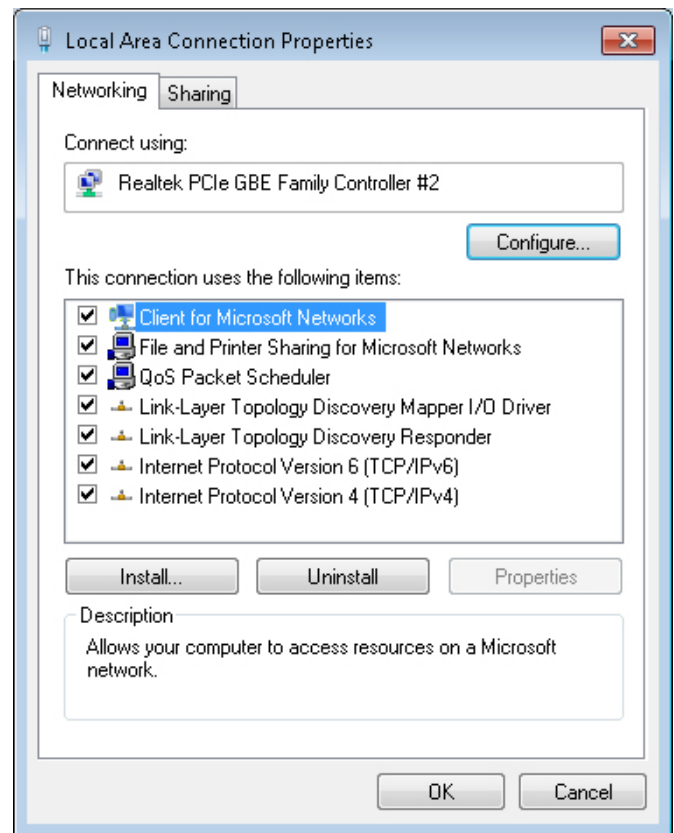
2. Select [Share Folder], check the [Share a T2 media storage as share folder] in the Direct access folder area. Select [OK].

If you need to confirm the User Accounts, select [Config.] > [General] > [Share Folder] and click [Settings...] in the User Account area. The default user account is described in the T2 User Manual.

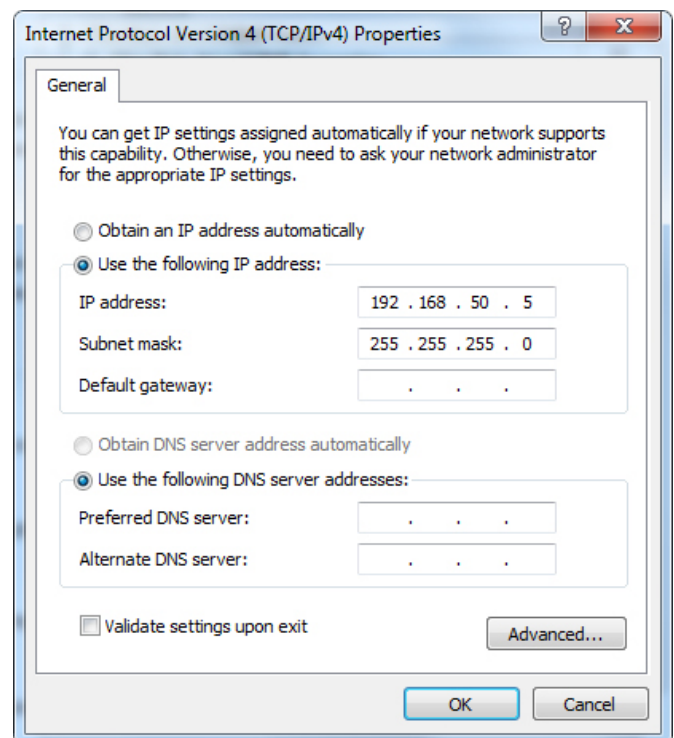


Windows PC network settings (if required)

1. Open [Control Panel] and enter “adapter” into the search box. Underneath [Network and Sharing Center] select [View Network Connections]. Right-click the network connection you are using and select [Properties].

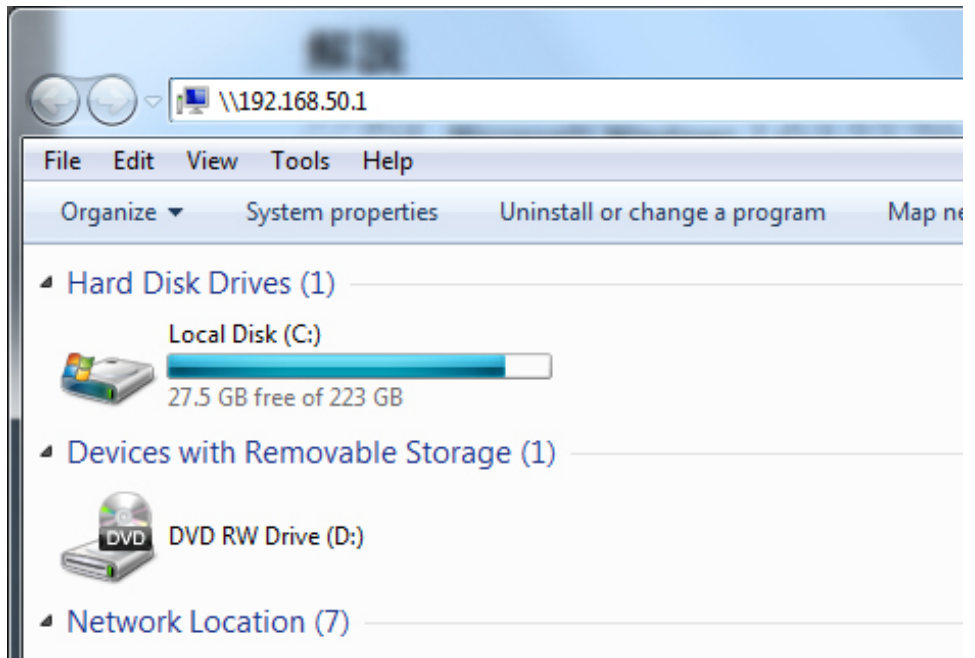


2. Select [Internet Protocol Version 4 (TCP/IPv4)] and click [Properties]. The Properties window appears. Set the IP address and the DNS server address.

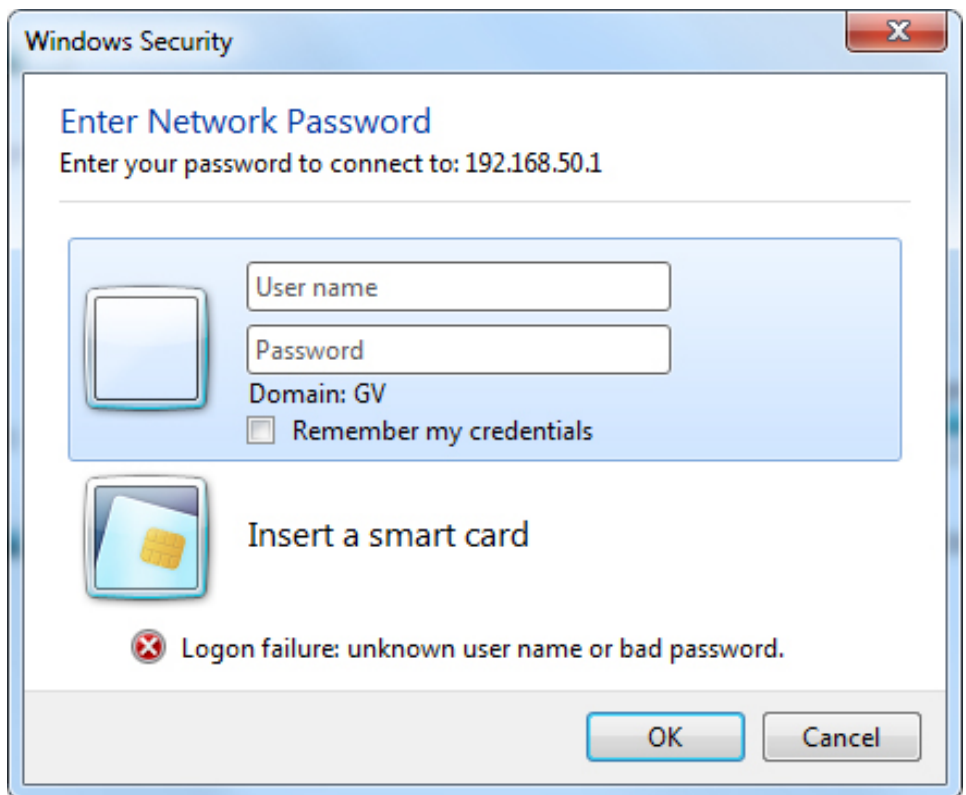


Windows PC access to T2

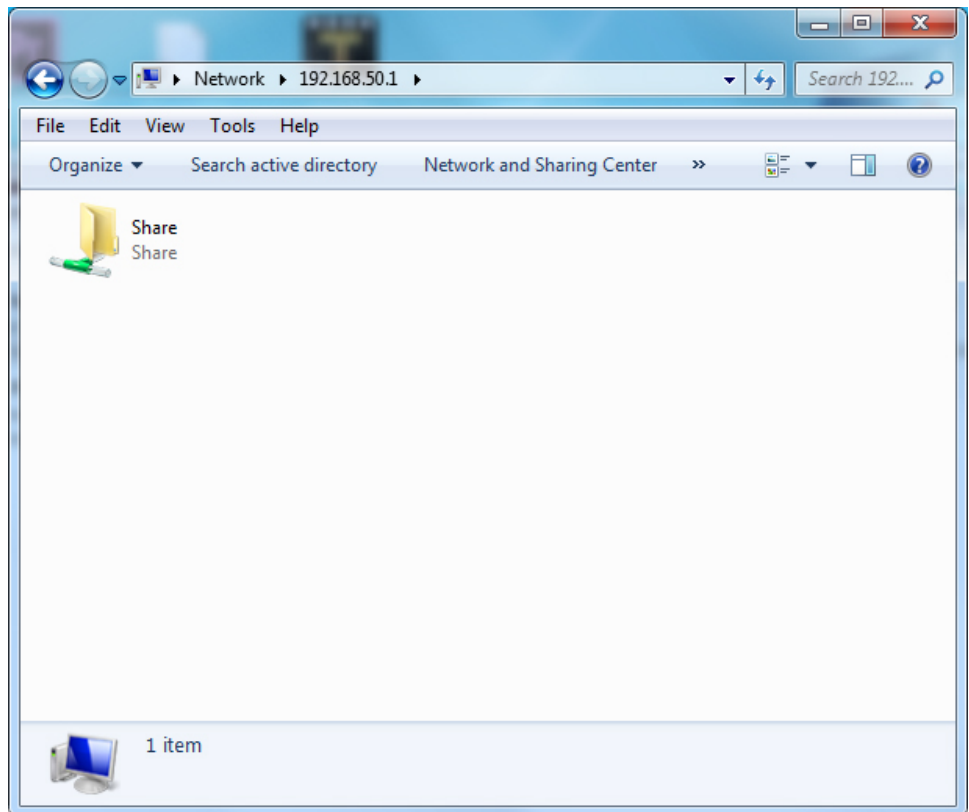
1. Open Windows Explorer enter the IP address of the T2 (e.g., 192.168.50.1) in the address bar.



2. The User Account window appears. Enter user name and password for the T2.

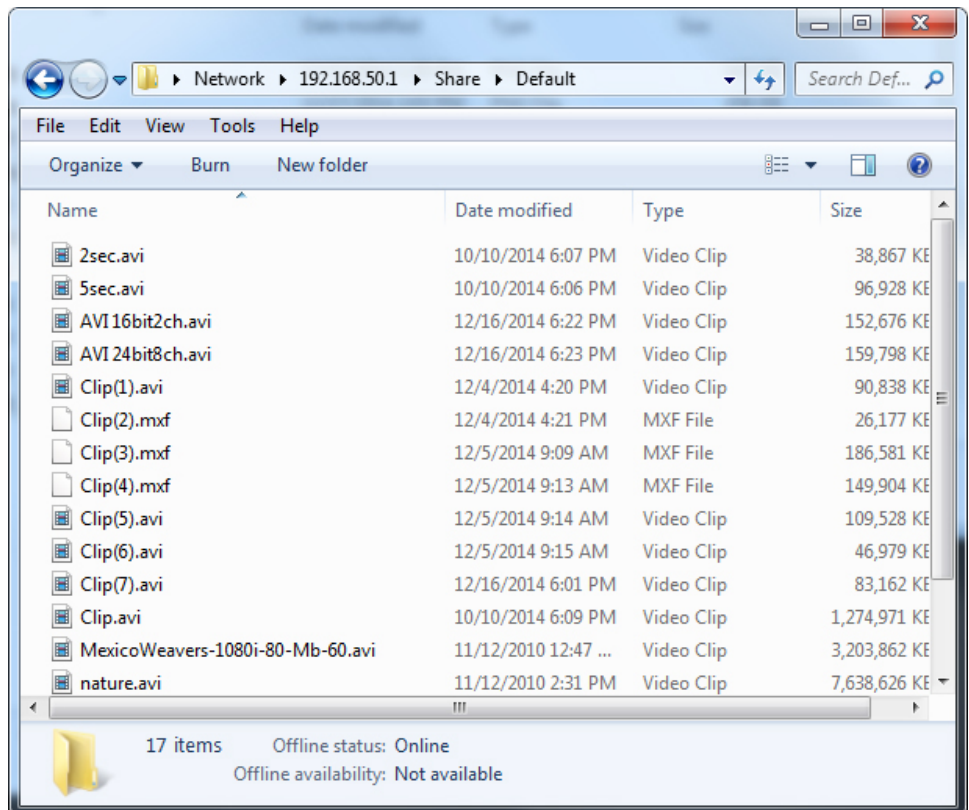


- The [Share] folder on the internal storage of the T2 is shown.



- Double-click the [Share] folder and you will see all the folders of the T2 bin. You will be able to select Grass Valley HQ AVI or XDCAM MXF files from your NLE software of choice.

Note: If you are capturing video clips on the T2, the captured clips will appear after approximately 10 seconds.

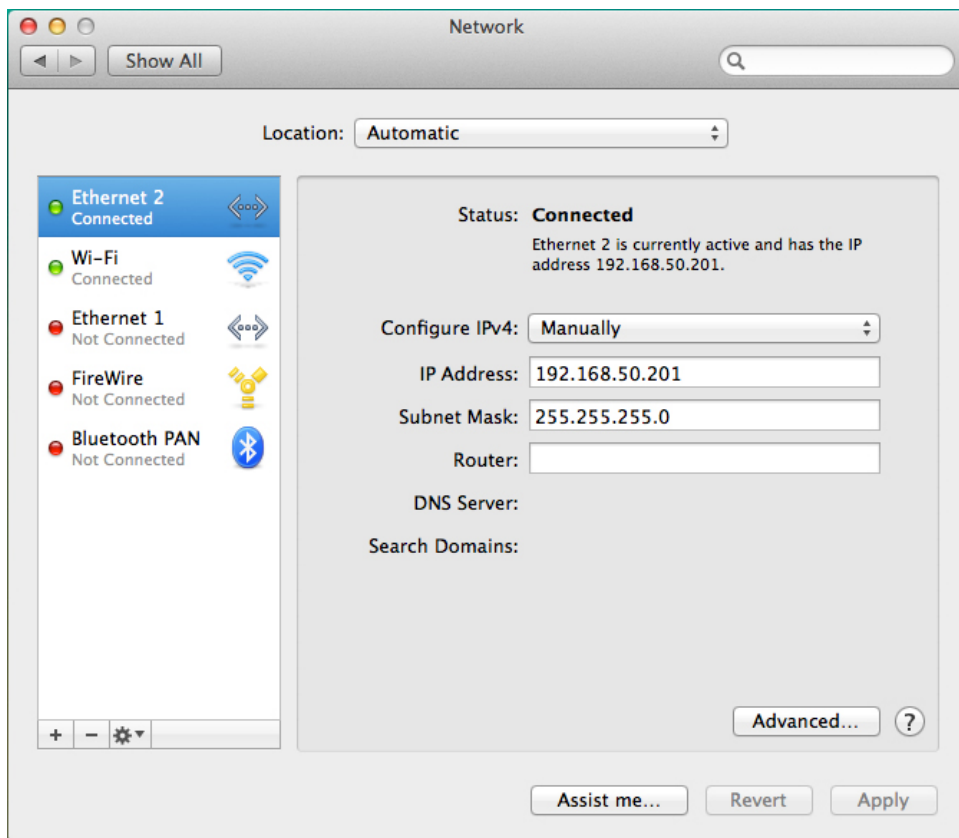


Overview of Edit-in-Place Workflow on a Macintosh (tested using Mac OS X Mavericks)

T2 Elite-A Settings: Same as for Edit in Place Workflow on a PC

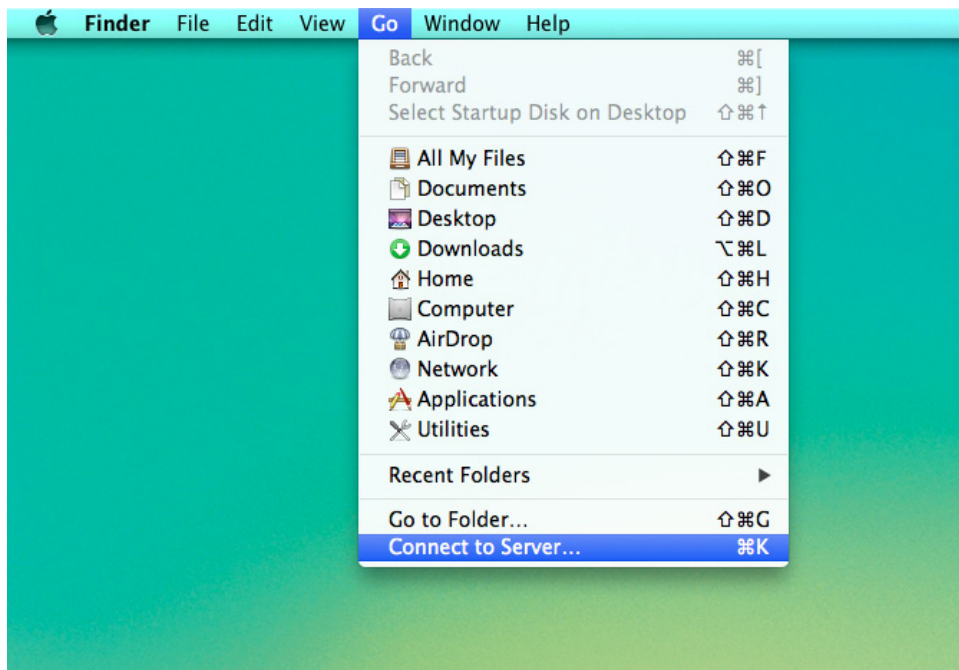
Mac network settings (if required)

1. Open [System Preferences] and select [Network]. Click the network connection that you wish to set up and set IP address and DNS server address.

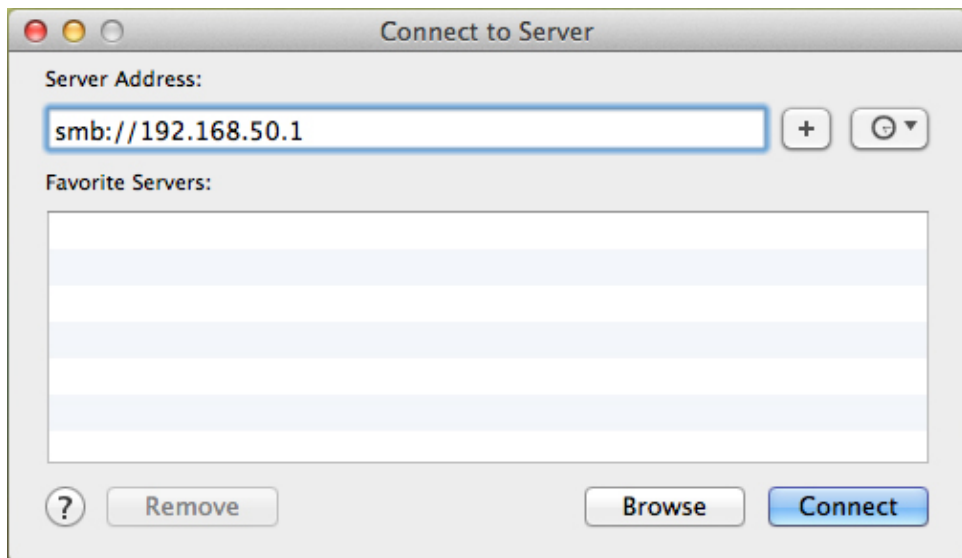


Mac access to T2

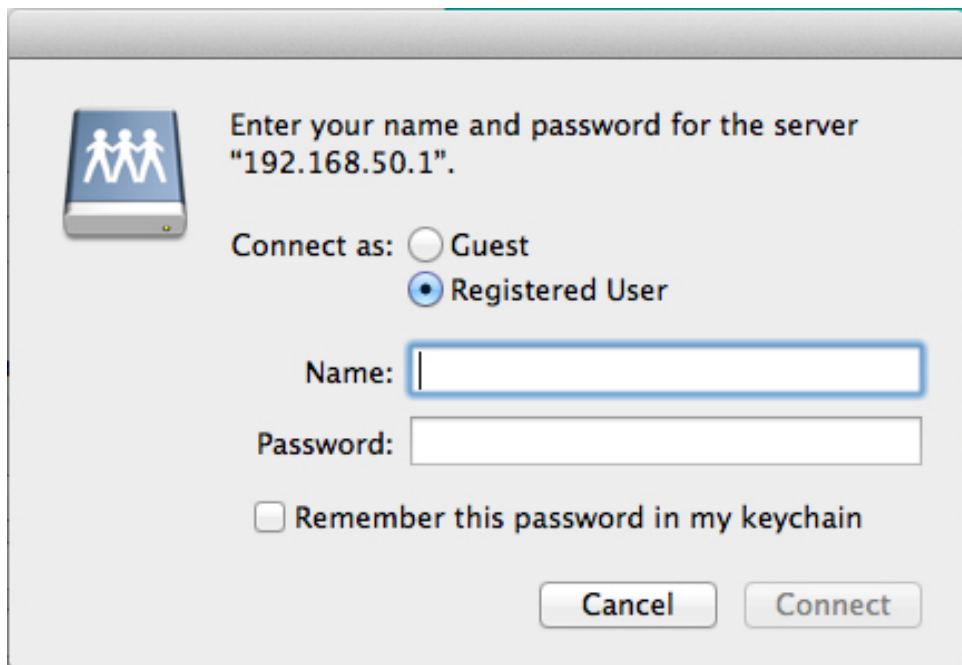
1. Select the [Go] menu > [Connect to Server...] in the Finder menu bar.



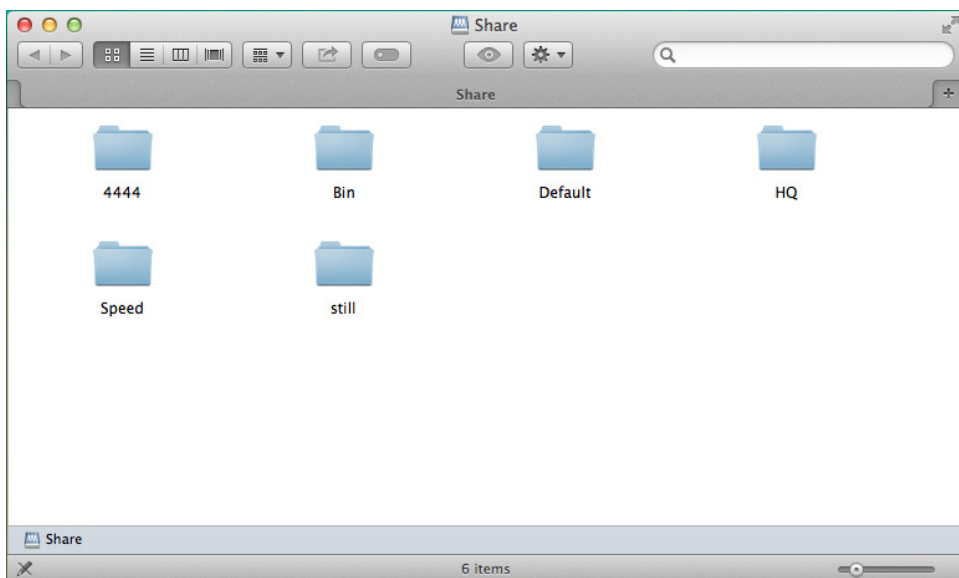
2. The Connect to Server window appears. Enter "smb://(IP address of the T2)" in the address bar. Click [Connect].



3. The User Account window appears. Enter user name and password of the T2.



- The [Share] folder on the internal storage of the T2 is shown.



- You will be able to select Grass Valley HQ AVI or XDCAM MXF files from your NLE software of choice.

Note: *If you are capturing video clips on the T2, the captured clips will appear after approximately 10 seconds.*

